





Social Economy and Sustainability Research Network
Partenariat sur l'économie sociale et la durabilité
Bridging, Bonding, and Building / Renforcement des liens et des capacités

CAPACITY BUILDING (CB) IN COMMUNITY UNIVERSITY RESEARCH ALLIANCES:

COMMUNITY ORGANIZATIONS DEVELOP THEIR OWN INDICATORS

The Watershed Project

Jocelyne Gauvin April 20, 2007



Social Economy and Sustainability Research Network Partenariat sur l'économie sociale et la durabilité

Bridging, Bonding, and Building / Renforcement des liens et des capacités

The Watershed Project

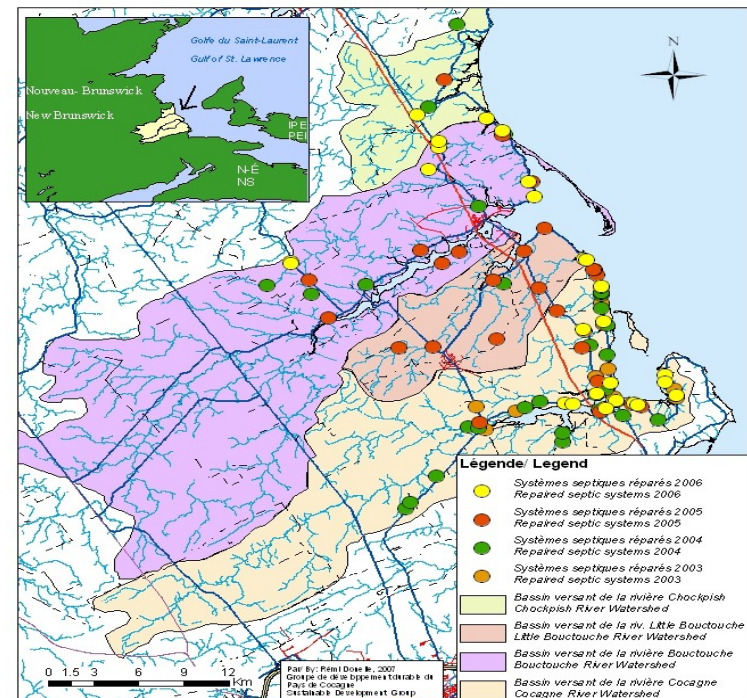
~ 20 Watershed groups
in New Brunswick

- common thread:

watershed=working unit

- common themes: water
quality, sustainable
development, quality of
life, community

Bassins versants de Kent-Sud, N.-B. - Kent-South, NB Watersheds



101 systèmes septiques réparés 2003-2006 101 septic systems repaired



Social Economy and Sustainability Research Network
Partenariat sur l'économie sociale et la durabilité

Bridging, Bonding, and Building / Renforcement des liens et des capacités

Developing and working
in **partnership**
is part of a group
MAKEUP and
a big part of
SURVIVAL





Social Economy and Sustainability Research Network
Partenariat sur l'économie sociale et la durabilité

Bridging, Bonding, and Building / Renforcement des liens et des capacités

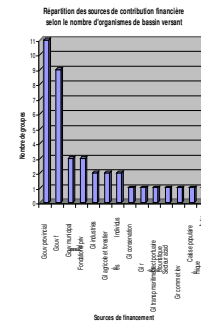
- Because of previous involvement with Dr. Omer Chouinard, Université de Moncton, we were invited to become partners of the Social Economy team.
- The **Watershed research project** was developed to more fully understand and eventually measure watershed groups' contribution to the social economy



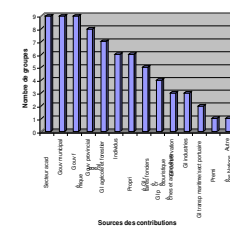
Social Economy and Sustainability Research Network Partenariat sur l'économie sociale et la durabilité

Bridging, Bonding, and Building / Renforcement des liens et des capacités

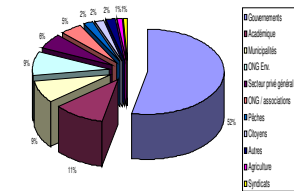
- Phase 1 Highlights:
- Variety of **financial** (14) and **non-financial** (16) contributors
- **Workforce** paid (60) and volunteer (up to 200)
- **Partnerships** (+10 sectors)
- Variety of **products** and **services** (10) to varied clientèle (+14)



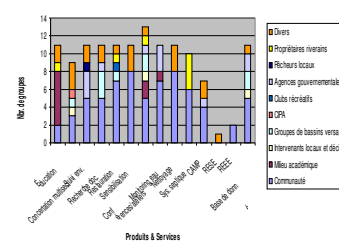
Repartition des sources de contribution non-financière (en service) selon le nombre d'organismes de bassin versant



Secteurs dans lesquels se situent les différents partenariats



Produits et services offerts et types de clientèle





Social Economy and Sustainability Research Network
Partenariat sur l'économie sociale et la durabilité

Bridging, Bonding, and Building / Renforcement des liens et des capacités

- Phase 2
- put a \$value to project activities (e.g.: remediation of defective wastewater systems)
- develop a 'tool /template' for groups to calculate their SE contribution by activity





- **Because of groups' presence CB happens** in communities ex:
 - Water quality projects
 - Faulty septic remediation programs
 - Public information sessions
 - Climate change adapt.
- Community members feel part of the solution to their own wellbeing and therefore agree to take part in and take on projects.



Social Economy and Sustainability Research Network
Partenariat sur l'économie sociale et la durabilité

Bridging, Bonding, and Building / Renforcement des liens et des capacités

- **Some lessons learned (re CB):**
- Importance and power
 - of public participation
 - of volunteer involvement
- Communities are empowered when provided with tools
- Better understanding of com-uni research (types of projects and each other's roles)





Social Economy and Sustainability Research Network
Partenariat sur l'économie sociale et la durabilité

Bridging, Bonding, and Building / Renforcement des liens et des capacités

- **Some lessons learned (re CB) during the research partnership:**
- Very demanding process
- Need to meet and discuss regularly
- Important to be open minded and listen
- Language and interpretation barriers are real
- Important to understand each other's role



Social Economy and Sustainability Research Network
Partenariat sur l'économie sociale et la durabilité

Bridging, Bonding, and Building / Renforcement des liens et des capacités

- **Capacity Building measures**
- Capacity to evaluate the learning and choose a different method if needed
- Capacity to engage in action and research with other groups
- Capacity to realize that all groups are not at the same level of understanding



Social Economy and Sustainability Research Network
Partenariat sur l'économie sociale et la durabilité

Bridging, Bonding, and Building / Renforcement des liens et des capacités

- **Capacity Building measures**
- Capacity to develop new partnerships
- # projects (ongoing and new)
- # involved citizens (same and new)
- *CB is different and unique to each project and each area*



Social Economy and Sustainability Research Network
Partenariat sur l'économie sociale et la durabilité

Bridging, Bonding, and Building / Renforcement des liens et des capacités

A multiple partner, Atlantic-wide, research project/Un partenariat de recherche au Canada atlantique
Research House, Mount Saint Vincent University, Halifax Nova Scotia B3M 2J6 Canada
Tel: 902-457-6748 Fax: 902-457-5547

seproject@msvu.ca

<http://www.msvu.ca/socialeconomyatlantic/>



Social Sciences and Humanities
Research Council of Canada

Conseil de recherches en
sciences humaines du Canada

Canada



Social Economy and Sustainability Research Network
Partenariat sur l'économie sociale et la durabilité

Bridging, Bonding, and Building / Renforcement des liens et des capacités

