

# The Relationship of the Social Economy to Community Development and Park Creation: A Case Study in Lutsel K'e, Northwest Territories



**Lutsel K'e Dene Band**

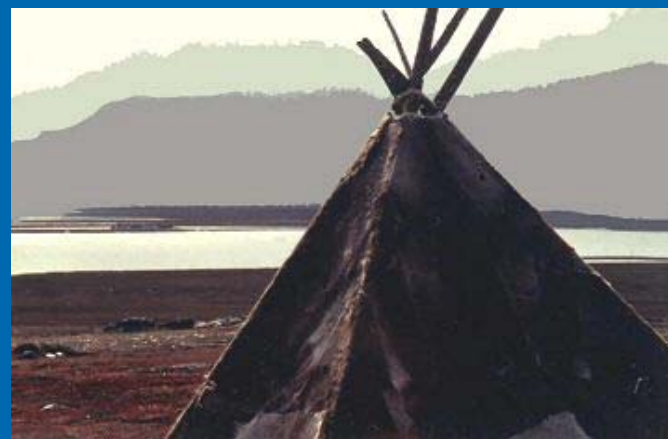
Post Office Box 28  
Lutsel K'e, Northwest Territories  
X0E 1A0



Presented by: Harvey Lemelin & Nathan Bennett

# Context: Lutsel K'e

- 7000BC - First Evidence of Humans
- 1770 - European Contact
- 1800+ - Trapping and Dog Teams
- 1850+ - Priests and Steamboats
- 1870+ - Epidemics
- 1880 - 1900 - Oil, Minerals, Gold Rush
- 1900 - Signing of Treaty 8
- 1902 - Fort Resolution Boarding School Opens
- 1925 - Hudson Bay Opens Trading Post
- 1927 - Thelon & RCMP
- 1954 - Homes Moved to Current Site
- 1960 - School Built
- 1970s - Introduction of Snowmobiles
- 1990s - Diamonds and Uranium



(Source: Griffiths, 2006)

(<http://www.thelon.com/lutselke.htm>)

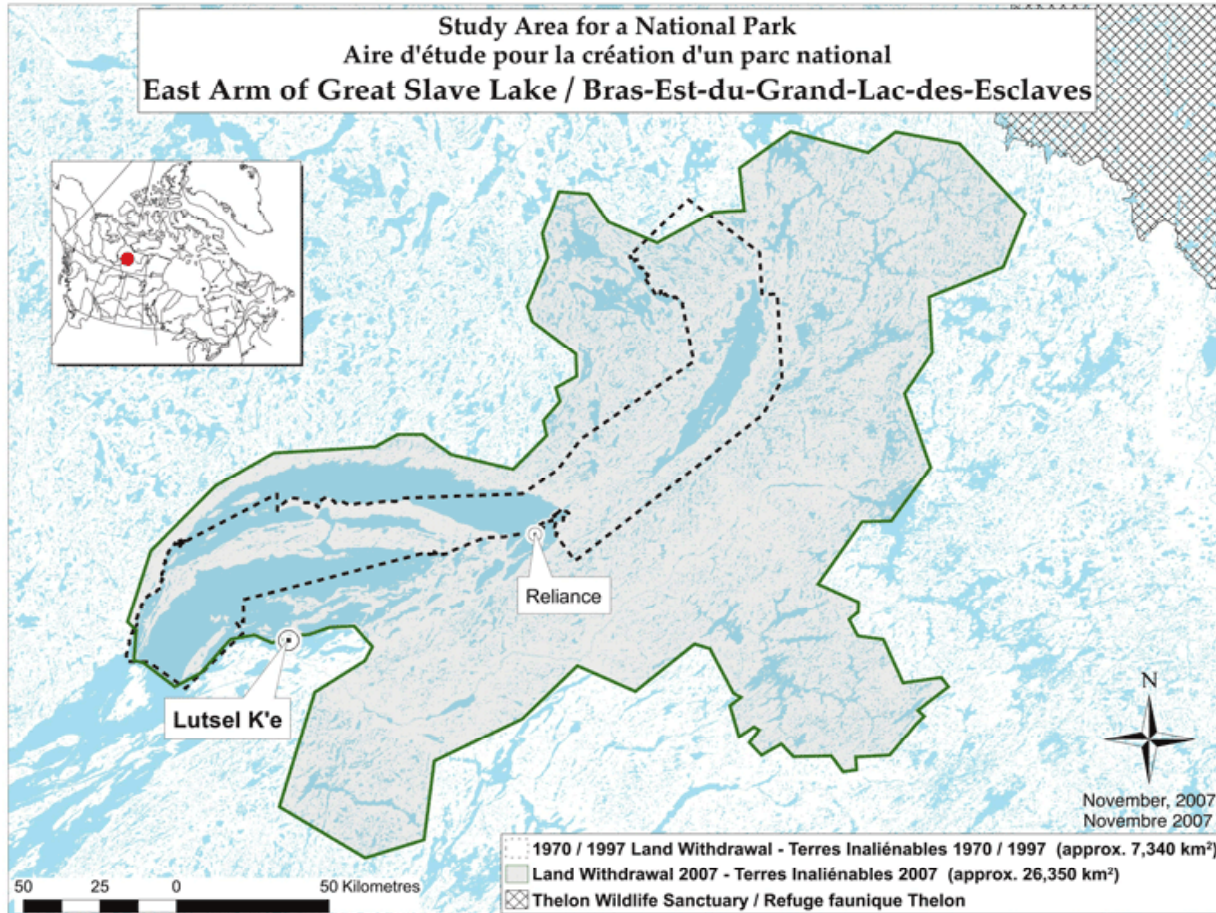


# Context: Protected Areas

- 1922 - Wood Buffalo Park Formed
- 1927 - Thelon Game Sanctuary Formed
- 1969 - Parks Canada Officials come to Lutsel K'e (Griffiths, 1987)
- 1969 - Brotherhood Formed - Dene Nation (Griffiths, 1987)
- 1971 - Initial Land Withdrawal
- 1971-2001 - Ongoing Talks and Negotiations - "Pack up your maps..."
- 2001 - Ready to Talk (Barrett, 2003)
- 2006 - MOU Signed (MOU, 2006)
- 2007 - Further Land Withdrawals (Parks Canada, 2007)
- Currently - Feasibility Studies, MERA and Consultations



# Context: Current Status of Proposed National Park



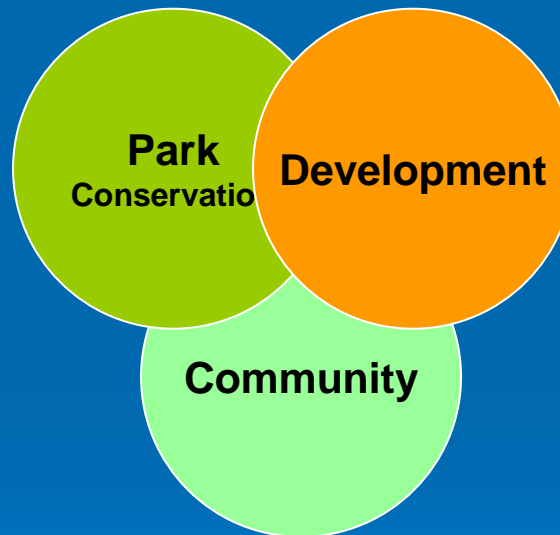
([http://www.pc.gc.ca/agen/nt1\\_E.asp](http://www.pc.gc.ca/agen/nt1_E.asp))

# Consideration: Potential Benefits and Possible Consequences

Potential Benefits	Possible Consequences
<ul style="list-style-type: none"><li>➤ Preservation of Local Eco-Systems</li><li>➤ Conservation for Future Generations</li><li>➤ Economic Benefits</li><li>➤ Jobs in Tourism and Park</li><li>➤ Increase in Tourism/Eco-Tourism<ul style="list-style-type: none"><li>• Solidification of Cultural Identity</li></ul></li><li>➤ Infrastructure in Local Communities</li></ul>	<ul style="list-style-type: none"><li>➤ Lack of Consultation</li><li>➤ Marginalization from Decision Making</li><li>➤ Negative Resident-Manager Relations</li><li>➤ Displacement of Traditional/Historical Values</li><li>➤ Loss of Opportunity to Access Resources</li><li>➤ Imposition of New Regulations</li><li>➤ Loss of Jobs from Development</li><li>➤ Tourism Can Have Negative Impacts</li><li>➤ Jobs not Filled Locally</li></ul>

# Consideration: Accountability to Community in Conservation and Development

The Most Desirable Outcome: Symbiotic (Win-Win-Win) Relationship between Park, Community and Development (Nepal, 2000):



Success of conservation depends on community support (Alexander, 2000; Vaino-Mattila, 2003)

# Clarification: Role of the Social Economy



(Kay, 2005)

# Project Goals

- 1) To examine potential social and economic benefits for Lutsel K'e related to the establishment of the park
- 2) To examine community capacity building that will maximize benefit
- 3) To clarify the role of the social economy in facilitating development relating to conservation

# Action Research

1. Research in Indigenous Context
  - Research “with” not “on”
  - CREE Philosophy (Lickers et al., 1995)
2. Includes a whole range of approaches and practices based in different paradigms.
  - Focused on improving society and quality of life
  - Participative
  - Grounded in Experience
  - Action Oriented (Reason & Bradbury, 2001)
3. Various studies have applied action research methodologies in Lutsel K'e (Parlee, Manseau & LDFN, 2005; Ellis, 2003)

# Research Design: Key Features

## 1) Collaborative Design Process

- To ensure research meets community needs and process is contextually appropriate.

## 2) Review of Meeting Minutes

- Examine community hopes and possible directions
- Look for gaps

## 3) Flexible Unstructured Interviews with Community

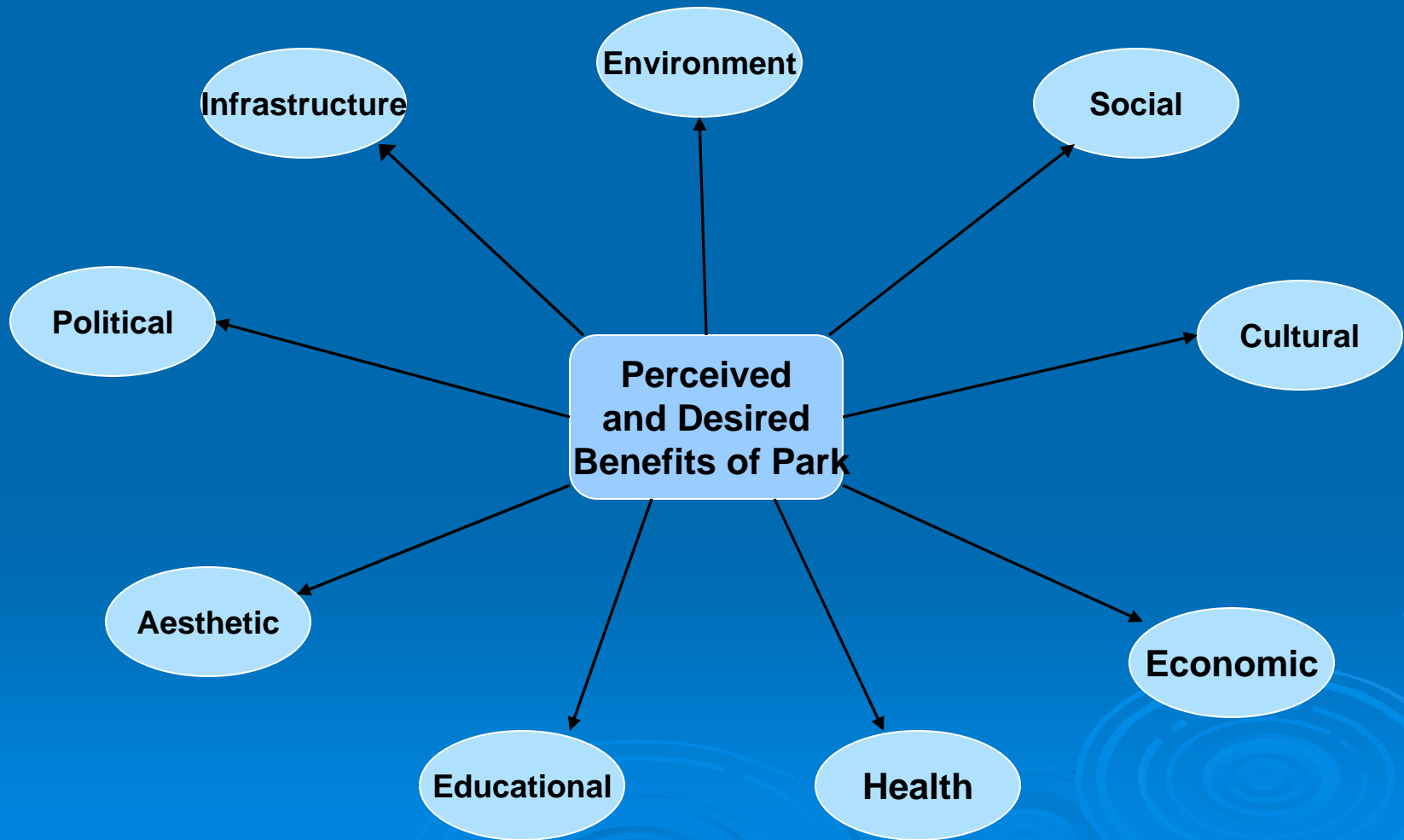
- Ensure accuracy of vision and direction
- Fill in gaps in understanding
- Open-ended ethnographic (in-depth) interviews (Fontana & Frey, 2003)
- Conducted in the field - Informal, Theme Based
- Recorded when possible - Supported with field notes

## 4) Formal Interviews with External

- From different backgrounds, knowledge areas.
- Open-Ended Questioning
- Recorded

## 5) Data Analysis

# Preliminary Analysis: Community Development



# Preliminary Analysis: Capacity Building

- Focusing on Strengths - Addressing Barriers
- Importance of Addressing Capacity at Individual (Training), Organizational (Community Supports, Policy, Programs), and Institutional (Agreements, IBA, Policy) Levels
- Identification and Use of Available Assets and Resources

# Preliminary Analysis: Social Economy

## A. Roles of Current Social Economy Organizations

- Coop
  - Capitalize on Tourism
  - Build Hotel in Community (Inns North)
- Denesoline Development Corporation
  - Develop Arms Length Tourism Body
  - Capacity Building for Tourism and Business Dev.
  - Capitalize on Park Contracts
- Thebacha Business Services (Community Futures)
  - Support Business Development
  - Source of Funding

# Preliminary Analysis: Social Economy

## B. Community Economic Development

- Significant Local Interest in Business Development
  - Catering to Tourists and Locals
  - To Capitalize on Park-Related Contracts
  - Lack of Community Supports
  - Confusion About Who is Responsible for CED
- Denesoline Development Corporation
  - Focused Outside Community
  - Mandate Moving Away from Supporting Local CED
- Thebacha Business Services
  - Limited Resources
- Room for Growth

# Preliminary Analysis: Social Economy

## The Social Economy and Tourism

- Support for Tourism Dev. Needed In Community
  - CED - Room for Growth
  - Cooperative Body - Potentially More Suited
  - Extensive Capacity Building Needed
- Potential for Tourism to Support Culture
  - Land Based Way-Of-Life
  - Integration with Cultural Activities and Events
  - Cultural Revitalization and Documentation
  - Development of Intercultural Understanding
  - Provides Rationale for Youth to Learn

# Preliminary Analysis: Social Economy

## C. Other Representations of the Social Economy

- Parks Working Group
  - Research and Advocacy
  - Integrating Community Social and Economic Development with Park Creation
  - Supporting Local Capacity Building
- ENGOs
  - Embracing Local Social Mandate
  - Filling Gaps in Funding to Support Local Capacity Building
- Conservation as Social and Economic Endeavor
- Community Elders as Social Economy?

# Value of Research



1. Community - Guide community capacity building and development objectives and maximize benefits from park establishment.
2. Social Economy Organizations - Examination of role in community development related to conservation and tourism.
3. Parks Canada - Guide policies and processes for consideration of community capacity building and development.

# Funding Bodies

- Social Economy Network of Northern Canada (SERNNOCA)
- Northern Scientific Training Program
- Aurora Research Institute Fellowship and Assistantship
- Parks Canada



**AURORA COLLEGE**  
Aurora Research Institute



Parks  
Canada

Parcs  
Canada

SERNNOCA is made possible through funding from:



Social Sciences and Humanities  
Research Council of Canada

Conseil de recherches en  
sciences humaines du Canada

Canada

Questions?

