

THE ECONOMIC IMPACT OF CO-OPERATIVES IN ONTARIO



WHAT IS A CO-OP?

Co-operatives are community-focussed businesses that balance people, planet and profit. They are formed to seize local opportunities or respond to local challenges.

Co-operatives are democratic, value-based, and member-focussed. As a trusted place to do business, **co-ops** are chosen by more than 1 in 7 people worldwide. Twice as many **co-ops** remain in operation after ten years as other types of business enterprise.

Ontario's co-ops: fast facts

49,000
VOLUNTEERS

♠ = 1,000



OLDEST
CO-OPS



Vineland Growers
CO-OPERATIVE
(November 20, 1913)

and

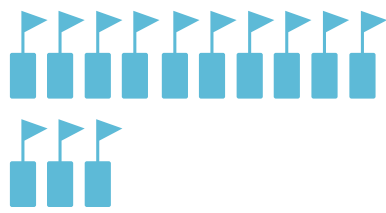


Guelph Campus
CO-OPERATIVE*
(November 27, 1913)

* also the oldest student housing co-op in Canada

1,300
CO-OPS
in Ontario
(estimated)

♠ = 100



10,000
of which are
BOARD MEMBERS

LONG-LASTING



TWICE as many co-ops remain in business **after 10 years** as other business enterprises

TRUSTED



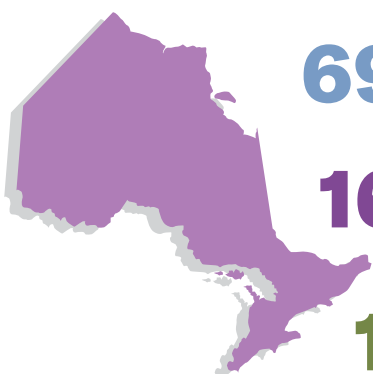
More than **2 OUT OF 3** Canadians agree that co-ops are a trusted place to do business

A BETTER WORLD



Co-operatives operate in more than **90 countries** around the world, employing over **100 MILLION PEOPLE**

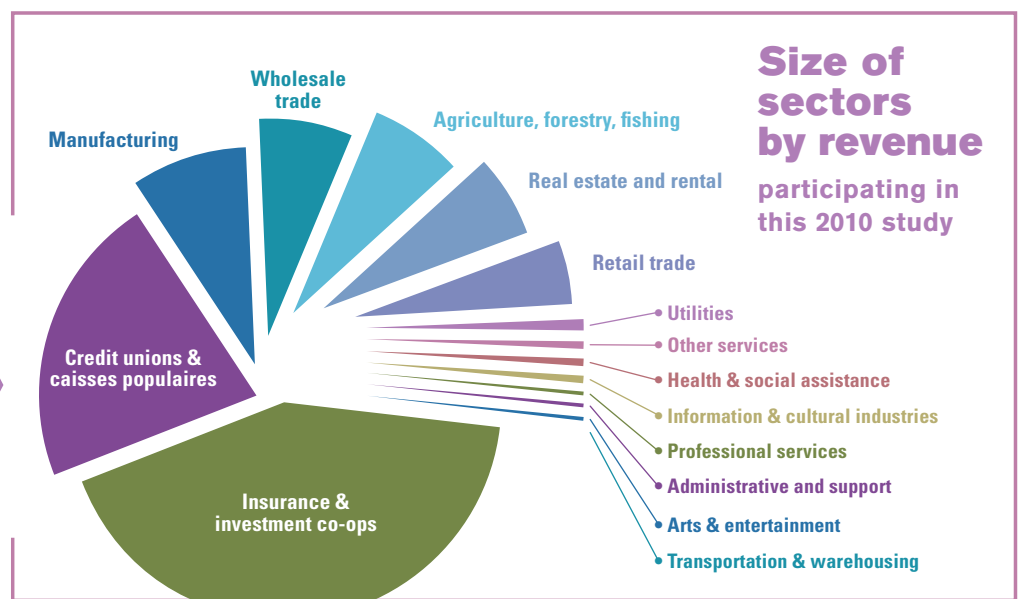
Participating in this 2010 study



693 non-financial (general) co-ops

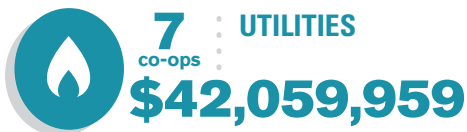
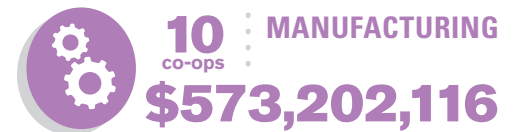
167 credit unions and caisses populaires

18 insurance and investment co-ops



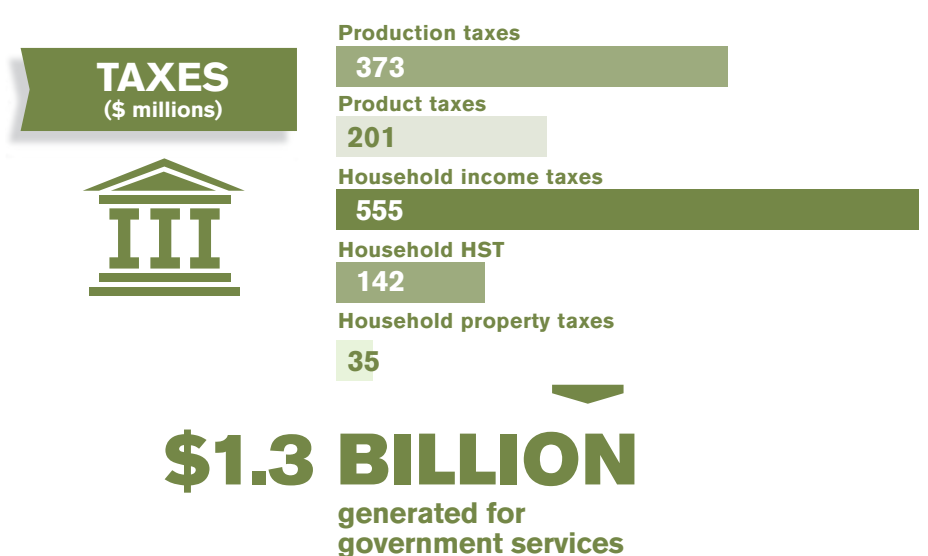
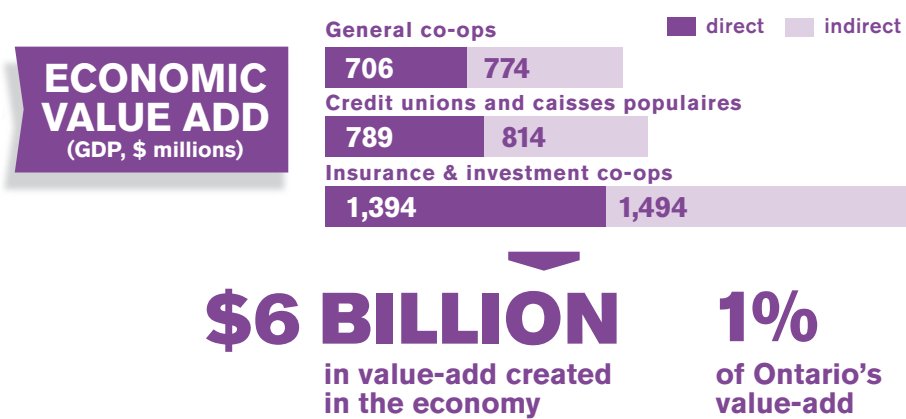
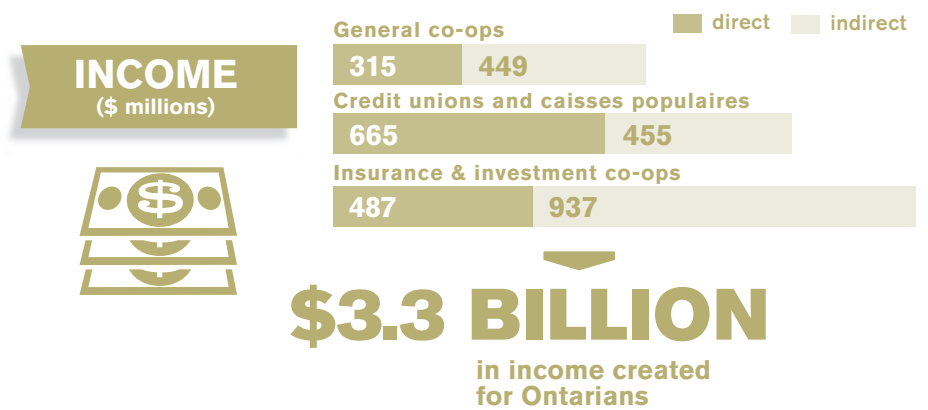
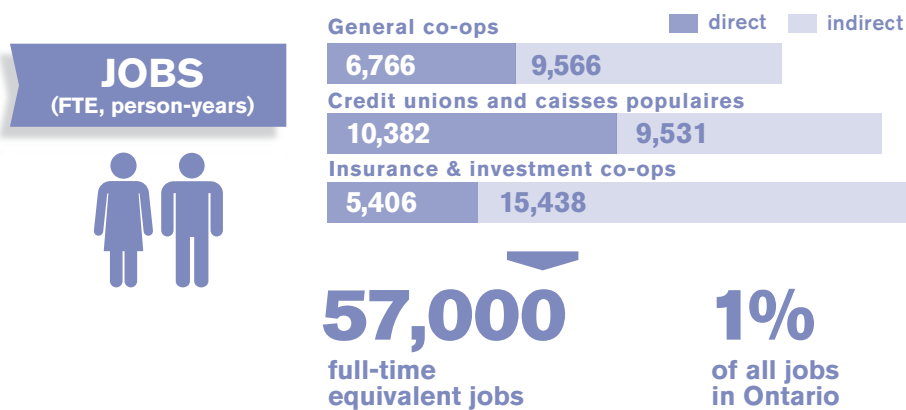
Sources: Industry Canada – Co-operatives in Canada in 2010; On Co-op – Ontario Co-operatives and Credit Union Census 2007; Economic Impact of the Co-operative Sector in Ontario (2010) Karaphillis, Duguid, Lake

Ontario's top-earning co-operative sectors*



* revenues earned, 2010

The direct and indirect impact of co-operatives



For the full report, visit ontario.coop

Funding for this research provided in part by the Government of Ontario in collaboration with the Canadian CED Network, with support from the Ontario Co-operative Association. The views expressed in this publication are of the researchers and the Ontario Co-operative Association and do not necessarily reflect those of the Province.



Ontario Co-operative Association (On Co-op™)
 450 Speedvale Avenue West, Suite 101
 Guelph, ON CANADA N1H 7Y6

Tel **519.763.8271**
 Fax **519.763.7239**
info@ontario.coop

@oncoop
 @ontariocoops