

**Sona
Drawings**

Monolinearity

**Froebel's
Gifts**

**An
Exploration
of Froebel's Gift #14
leads to Monolinear,
Re-entrant, Dichromic
Mono-Polyomino
Weavings**

Re-entry

**Strand
Direction**

**Dichromic
Tesselation**

Polyomino

**Monohedral
Tesselation**

**An
Exploration
of Froebel's Gift #14
leads to Monolinear,
Re-entrant, Dichromic
Mono-Polyomino
Weavings**



by Eva Knoll and Wendy Landry

Froebel's Gifts

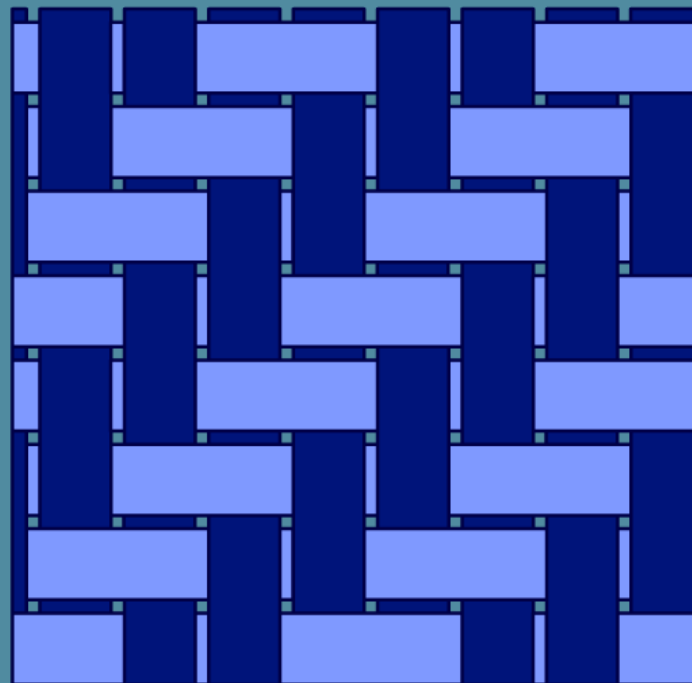
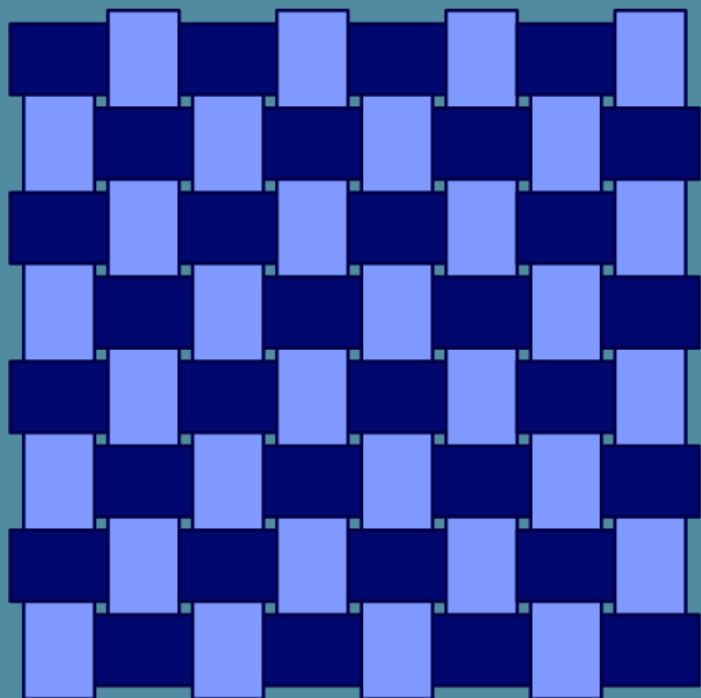
Froebel's Gifts are a series of 28 objects designed to help children learn about shapes, colors, and numbers. They are used in the Froebelian method of education, which emphasizes play and learning through objects.

Friedrich Wilhelm August Fröbel (1782 – 1852) is credited for the invention of Kindergarten, which has set the standard for early schooling for a long time.

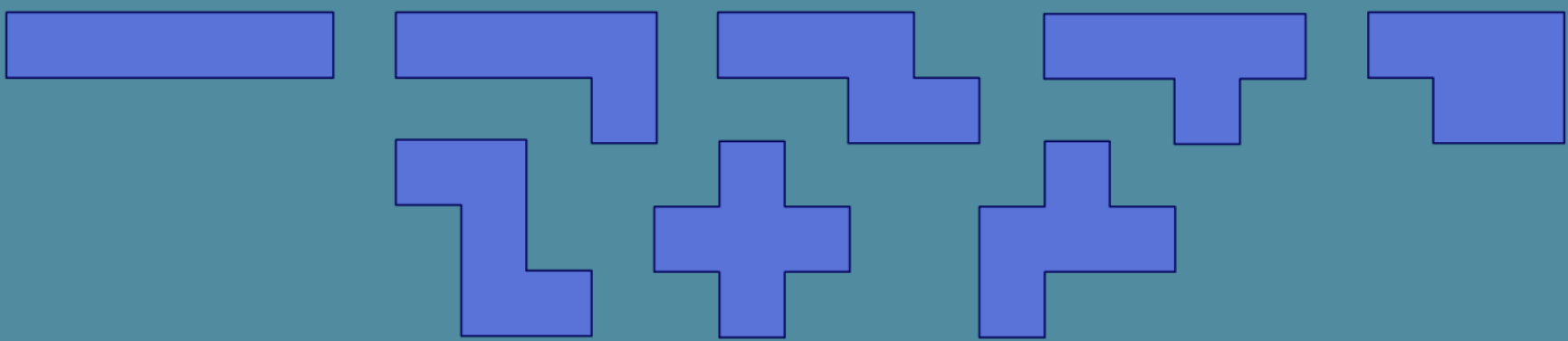
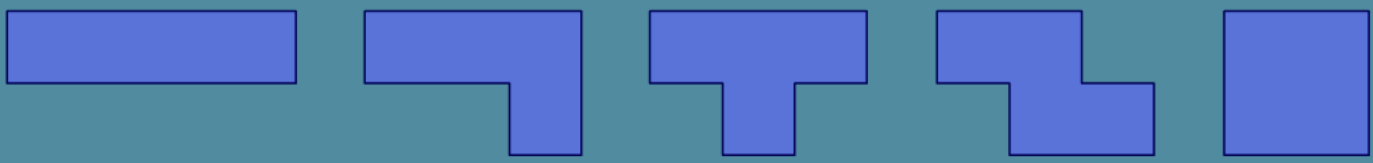
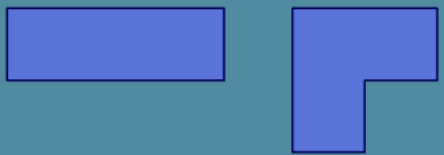
He designed a series of "Gifts" for children to play with that would provide them with important learning experiences.

Gift # 14 is the gift of weaving.

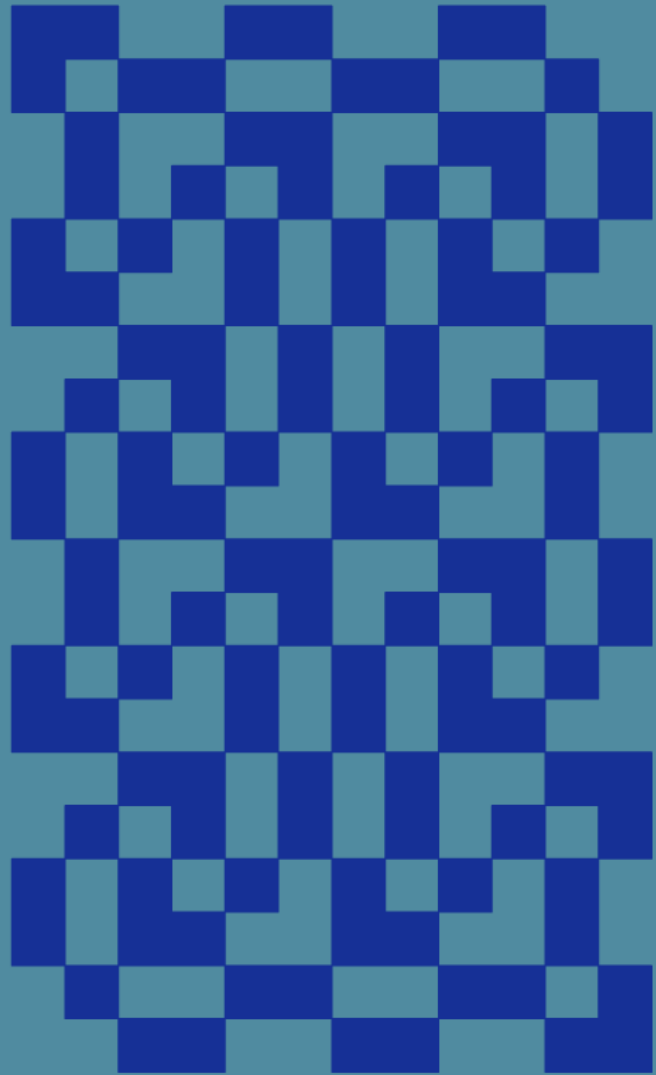
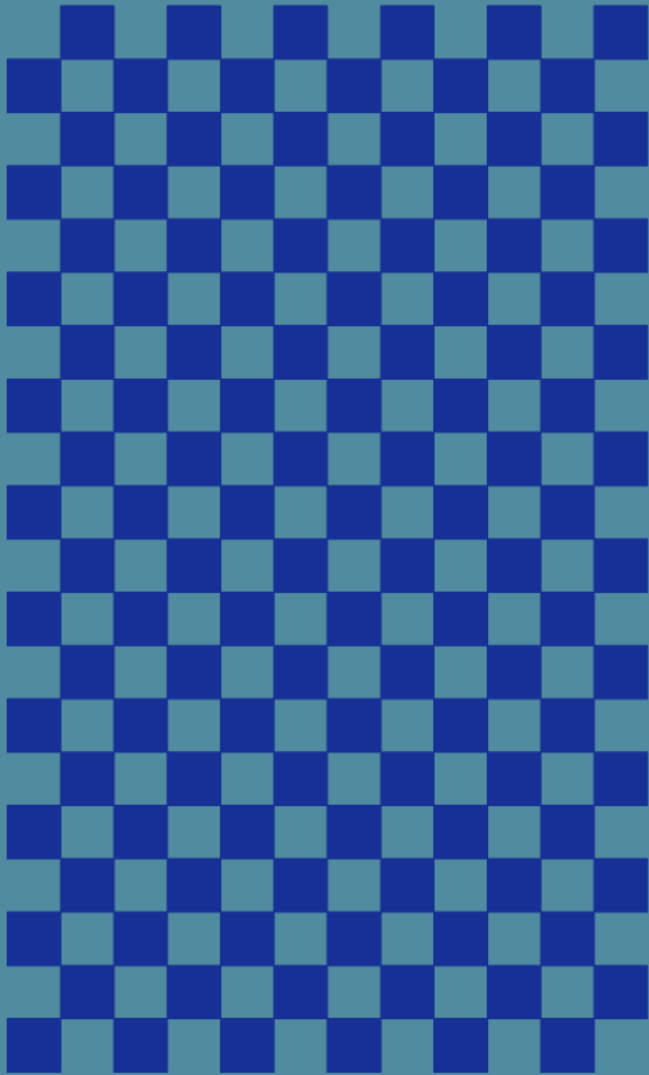
Strand Direction



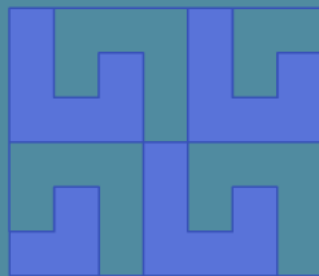
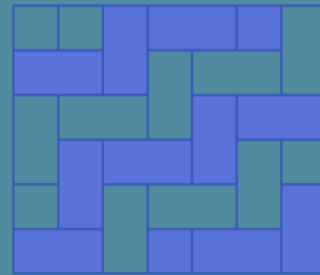
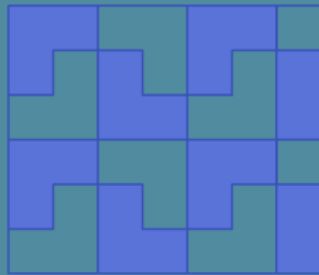
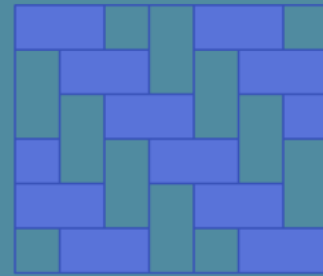
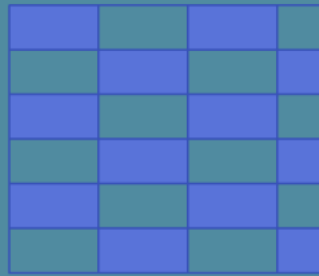
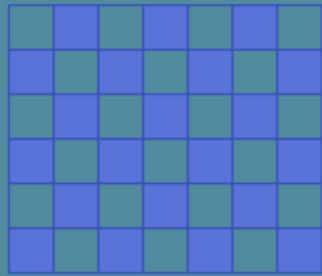
Polyomino



Monohedral Tessellation



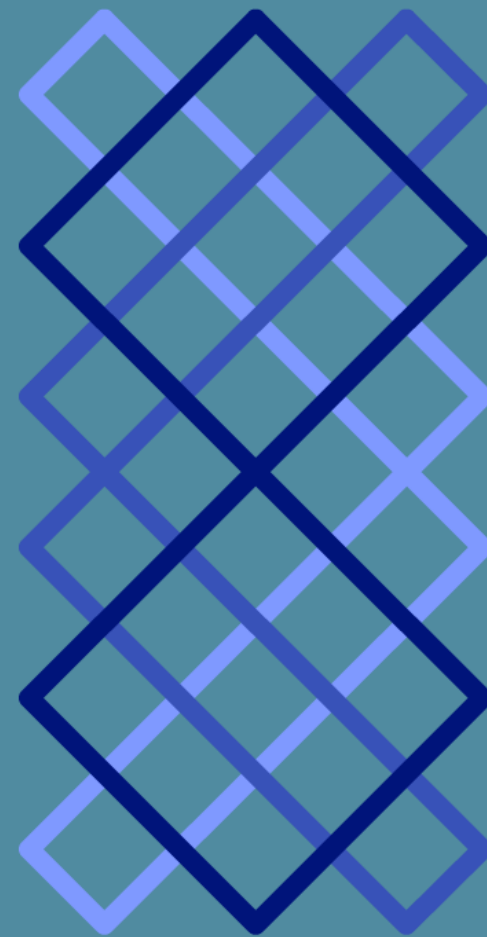
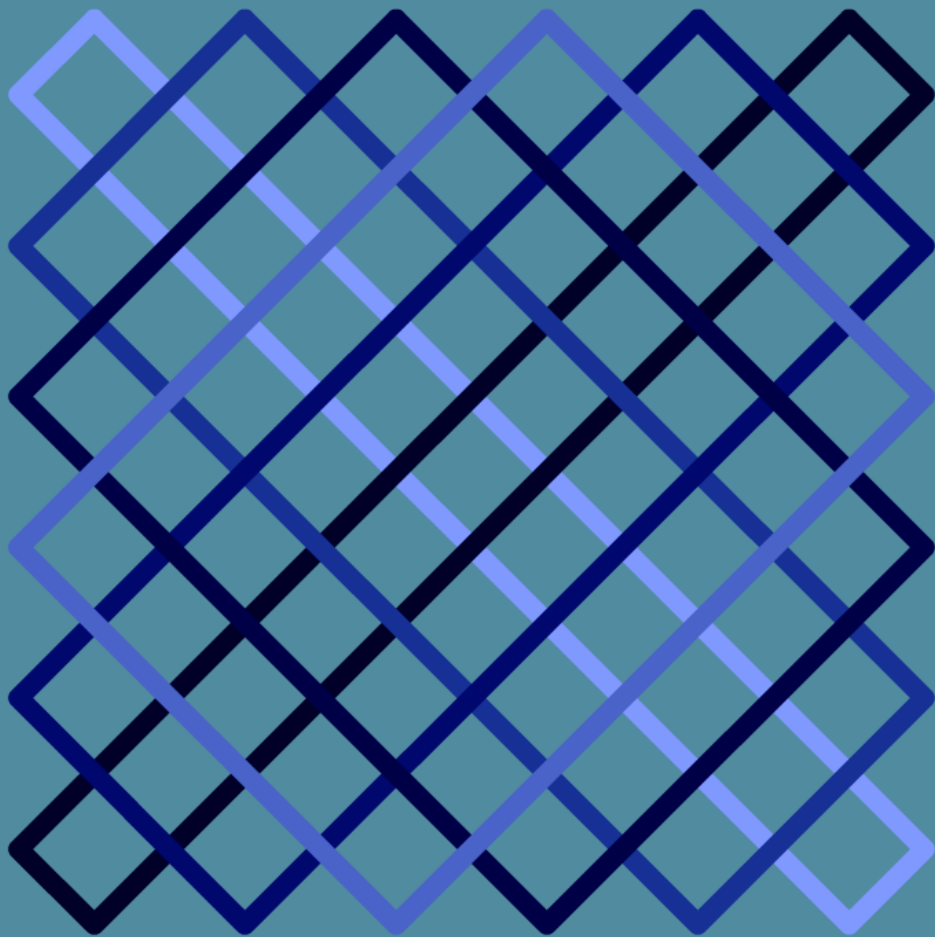
Dichromatic Tessellation



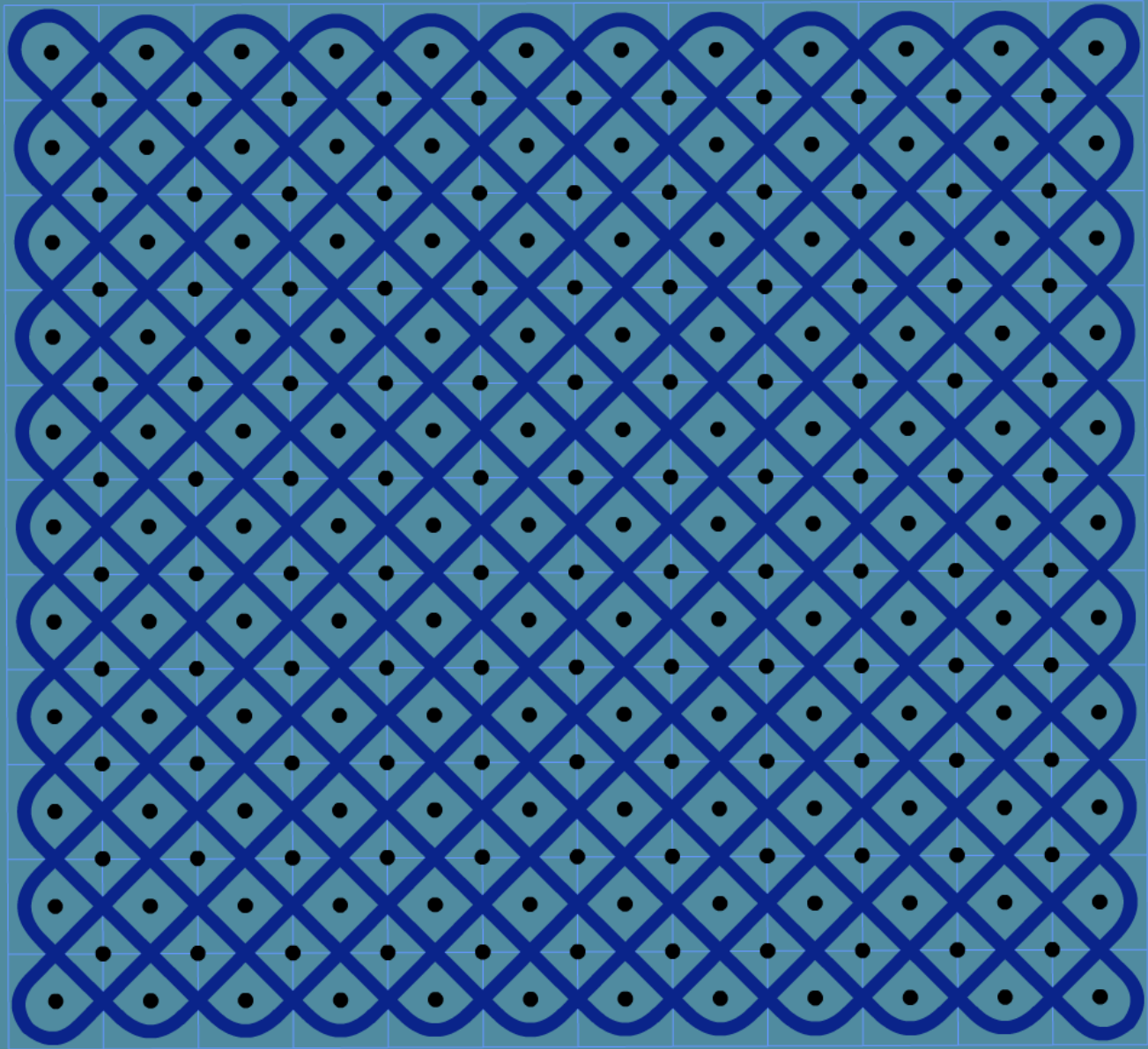
Re-entry



Monolinearity



Sona Drawings



**Sona
Drawings**

Monolinearity

**Froebel's
Gifts**

**An
Exploration
of Froebel's Gift #14
leads to Monolinear,
Re-entrant, Dichromic
Mono-Polyomino
Weavings**

Re-entry

**Strand
Direction**

**Dichromic
Tesselation**

Polyomino

**Monohedral
Tesselation**

